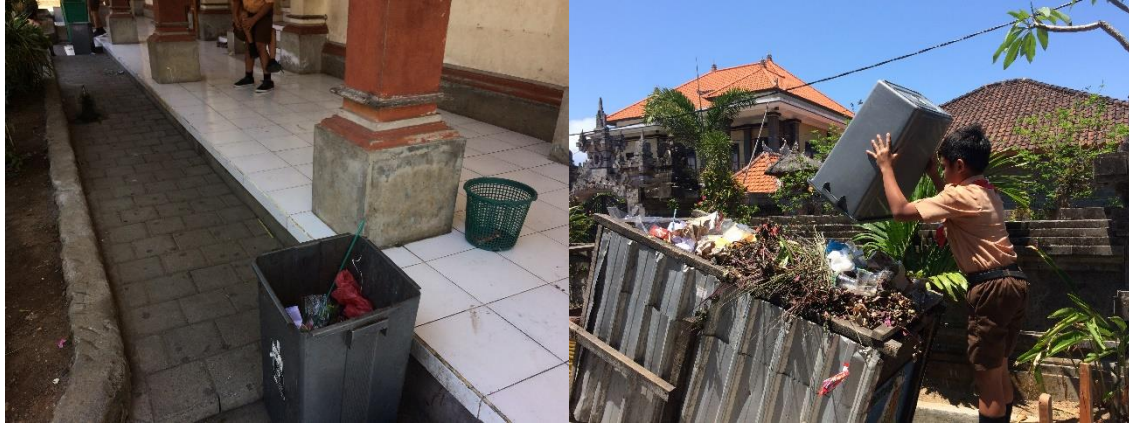


PRE-ASSESSMENT SDN 3 BENOA





- SDN 3 Benoa has trash in every classroom, albeit only one for every waste.
- They have activities involving environment, especially in scout
- The children are aware about putting the trash in the bin and not littering. However, because of not frequent pick up by third party, the wind carried away the trash from full containers.
- The school provided students with sink to wash their hands
- They also have UKS (Usaha Kesehatan Sekolah) or School Healthy System

No	Pertanyaan	Jawaban		Catatan
		Ya	Tidak	
1	Apakah siswa/siswi terbiasa membuang sampah sembarangan di area sekolah? <i>Do the students litter in the school or classroom area?</i>		√	
2	Apakah tersedia sampah terpisah untuk sampah bisa didaur ulang dan sampah tidak bisa didaur ulang? <i>Are the trash bins separated between recyclable & non-recyclable waste?</i>	√		Hanya tersedia satu disetiap kelas
3	Apakah siswa/siswi diajari perbedaan sampah dapat didaur ulang dan sampah tidak dapat didaur ulang? <i>Are the students taught the difference between recyclable & non-recyclable waste?</i>		√	Mereka sudah diajari sampah organik dan non-organik
4	Apakah siswa/siswi diajari mengenai problema sampah di Pulau Bali? <i>Are the students taught about waste issue on the island?</i>	√		
5	Apakah siswa/siswi memiliki aktivitas membuat kompos di sekolah? <i>Does the school have composting activities for students?</i>		√	

6	Apakah sekolah memiliki kegiatan berkebun untuk siswa/siswi? <i>Does the school have gardening activities for students?</i>	√		
7	Apakah sekolah memiliki kegiatan reforestasi? <i>Does the school have reforestation program?</i>		√	
8	Apakah sekolah atau siswa/siswi memiliki grup pecinta lingkungan sebagai bagian aktivitas ekstrakurikuler? <i>Does the school and/or students have an environmental group as an extracurricular activity?</i>		√	
9	Apakah sekolah mengajarkan siswa/siswi mengenai pertanian organik dan/atau produknya? <i>Does the school teach the students about organic farming and/or products?</i>		√	
10	Apakah sekolah memiliki kapasitas untuk menyediakan produk makanan organik untuk para siswa/siswi? <i>Does the school have the capacity to provide organic food for students?</i>		√	